

MetaProducts Net Activity Diagram

Get Your Network Activity Under Control!

Application that monitors your computer network and Internet activity



Product description

Net Activity Diagram visualizes your computer Internet activity and network flow. Unlike network monitoring and control applications that only network administrators can figure out, Net Activity Diagram is easy enough for inexperienced users to appreciate. You can view all established connections, monitor network traffic over any period of time, and set up various notifications.

Net Activity Diagram displays network activity using floating windows and tray icons. You can adjust colors, font sizes, and transparency according to your favorite desktop theme.

You can customize each diagram's name, colors, text, and size (for diagrams other than tray icons). Multiple graphs can be active simultaneously, each monitoring specific components. The tray diagram can be split up into multiple tray icons, spanning a greater length of time. Units for data and speed can be customized - KB, MB, kbps, Mbps, etc., although the default "auto" setting chooses the most appropriate units. Each of the graphed parameters can be customized with respect to connection type.

Traffic statistics

The program has comprehensive statistical capabilities to monitor traffic for a specified time period. You can filter traffic by connection type, IP address, port, and other parameters.

The Active Connections dialog shows all connections established with other computers, and the amount of information that passes through each one.

Smart Filtering

The program has a unique and reliable Smart Filtering feature to monitor network traffic by Internet protocol. Unlike other network monitors, Net Activity Diagram analyzes Internet connections independently from port numbers, allowing you to see web, FTP, streaming media, and other activity separately. Another useful feature is the ability to count the local network (Intranet) traffic separately from Internet traffic.

Traffic limit notifications

Net Activity Diagram notifies you when traffic exceeds your predefined limits. You can be notified via email, net send, message box, sound, or an application launch.

Wi-Fi signal strength

The program also provides information about Wi-Fi signal strength. With its Wi-Fi signal strength indicator in the system tray, it's easy to find the place where your wireless connection is fastest and most reliable.

The types of traffic you can monitor are:

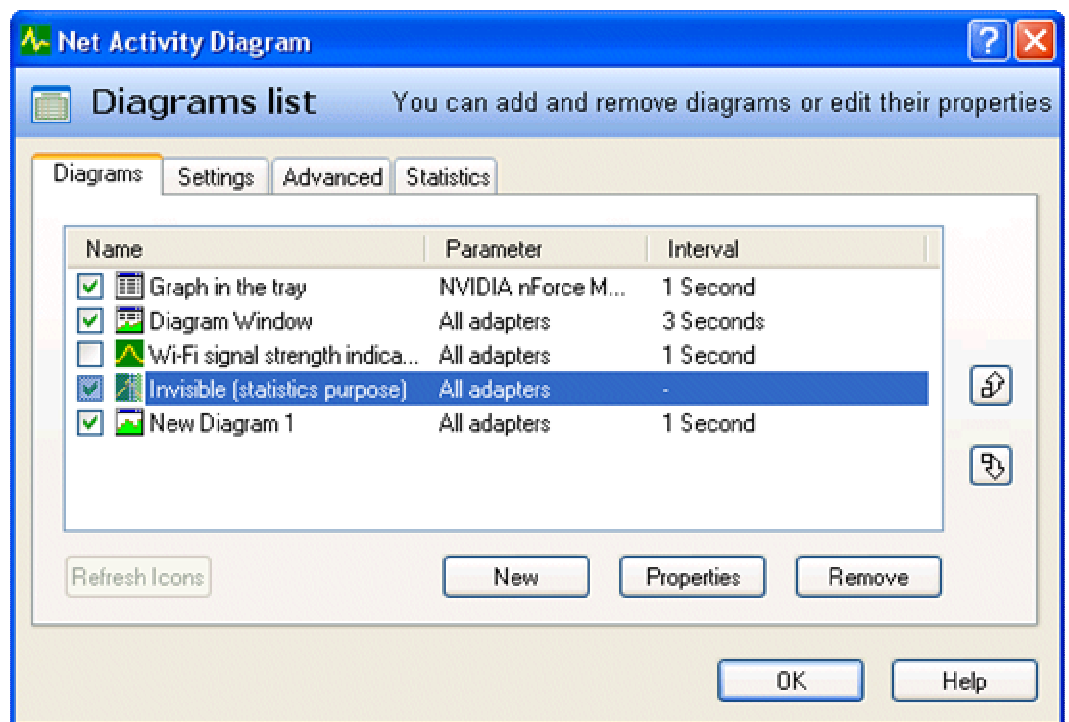
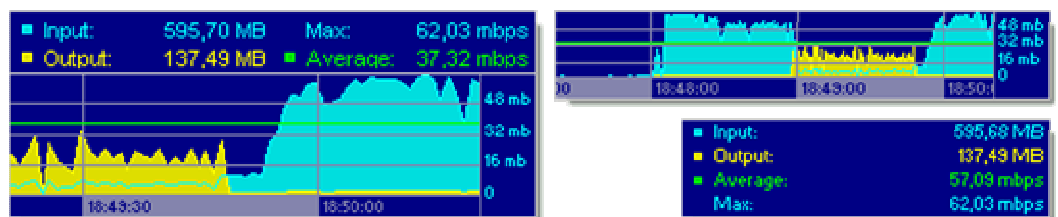
- web traffic (http)
- encrypted web traffic (https)
- file transfer traffic (ftp)
- Windows Networks traffic (netbios)
- Domain name resolving (domain)
- E-mail sending (smtp)
- E-mail receiving (pop3)
- E-mail receiving (imap)
- Usenet traffic (nntp)
- streaming audio and video (rtsp)
- Plus you can set up custom filters for any other application you need (for example, an ICQ application.)

System requirements:

- Microsoft® Windows® 95, Windows 98, Windows 98 Second Edition, Windows Millennium Edition, Windows 2000, Windows NT® 4.0, Windows XP, Windows 2003 or Windows Vista
- 64MB of RAM, or the minimum memory required to run Windows
- 2Mb of available hard-disk space

Main features include:

- Program monitors all of your computer Internet traffic.
- Net Activity Diagram now supports seven types of traffic diagrams - Tray Icon, floating windows with graph and/or with text, combined diagrams, invisible (for statistic purposes only) and others.
- All diagrams can be customized with colors, size, display time period, etc.
- The Smart Filtering feature allows to count traffic of each of your applications - determine how much traffic was consumed by your browser, email client, etc.
- The Active Connections dialog shows the connections established on your computer - this gives the ability to examine the Internet activity in detail.
- The Statistics dialog gives an opportunity to overview the traffic consumption over time, see the detailed reports based on the specified Smart Filtering engine filters or the overall traffic chart.
- The Traffic Notifications feature allows you to be informed when you exceed the traffic limits you setup. You can use email, Net Send, sound, message box and other notifications.



MetaProducts Corporation

702 Berrocales de Avila
Tampa, FL 33613 USA
www.metaproducts.com

For more details about Net Activity Diagram, visit
<http://www.netactivitydiagram.com>

Intel and Pentium are trademarks or registered trademarks of Intel Corporation or its subsidiaries in the United States and other countries. Microsoft and Windows are either registered trademarks or trademarks of Microsoft Corporation in the United States and/or other countries. All other trademarks are the property of their respective owners.