

MetaProducts TrayIcon Pro

Use your tray as a launch pad!



Product Description

TrayIcon Pro lets you open your favorite applications, documents, and folders from the system tray. It gives you one-click access to all of your important information, eliminating the need to search for desktop icons, find programs in your Start Menu, or scour your Windows Explorer trees for letterheads, fax cover sheets, or other documents.

Easy to use

You can add items to your system tray by using the program's simple, intuitive tabbed interface. You can also right-click any program, document, or folder, and click the "Add to TrayIcon Pro" link. Power users will appreciate being able to specify the starting directory and arguments of any program that they add.

TrayIcon Pro lets you create multi-layered menus containing an unlimited number of icons. You can rearrange their order by dragging and dropping them to a new location. The program's separator bars help to organize the links meaningfully. TrayIcon Pro lets you choose between icons and text to identify each program, document, and folder in your menus.

Special folders

In addition to running normal programs from TrayIcon Pro, the program also supports system folders such as the Desktop, My Computer, and the Recycle Bin. By adding the dial-up networking icon to TrayIcon Pro, you get a listing of all your dial-up network connections, allowing you to get onto the Internet with just two clicks. Adding the Control Panel icon gives you instant access to all of the programs in the Start Menu's Control Panel window. You can even add an icon to quickly open the status window for any printer on your system.

Your favorite links

Tray Icon Pro supports Internet Explorer Favorites, Netscape, Mozilla and FireFox Bookmarks and Opera Hotlists as well as a history of recently browsed URLs. So, you can easily browse Web sites directly from your tray!

Hide applications to tray

Another great feature is the ability to minimize any of your application to the system tray. TrayIcon Pro adds its button next to the standard Minimize/Maximize/Close button to all windows. You can choose to minimize the application to a separate tray icon or to a menu in the tray.

System requirements:

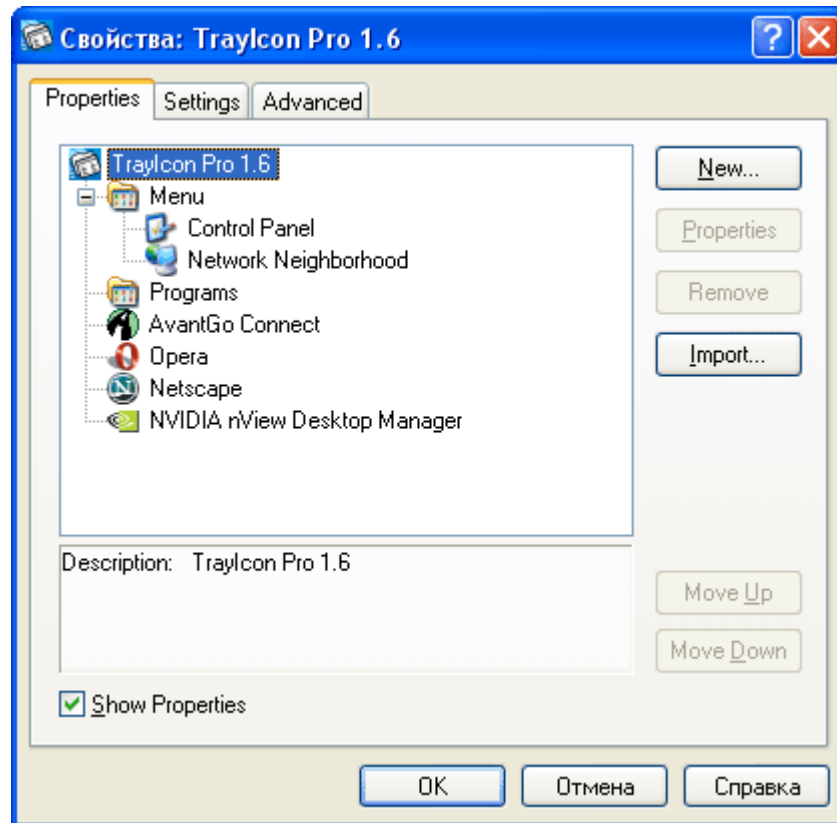
- Microsoft® Windows® 95, Windows 98, Windows 98 Second Edition, Windows Millennium Edition, Windows 2000, Windows NT® 4.0, Windows XP, Windows 2003 or Windows Vista
- 64MB of RAM, or the minimum memory required to run Windows
- 2Mb of available hard-disk space

Related products:

- DeskTool
- AutoDialogs

Main features include:

- Add shortcuts to your favorite applications to the system tray (Windows notification area near the clock) and run with a single click
- Add shortcuts to folders to the system tray including system folders such as Desktop, My Computer, Recycle Bin, Dial Up and others.
- Browse Internet Favorites, Opera, Netscape, Mozilla and FireFox bookmarks from the tray
- Minimize any of your running application to the system tray



For more details about Tray Icon Pro, visit <http://www.metaproducts.com/TP.html>

MetaProducts Corporation

702 Berrocales de Avila
Tampa, FL 33613 USA
www.metaproducts.com

Intel and Pentium are trademarks or registered trademarks of Intel Corporation or its subsidiaries in the United States and other countries. Microsoft and Windows are either registered trademarks or trademarks of Microsoft Corporation in the United States and/or other countries. All other trademarks are the property of their respective owners.